

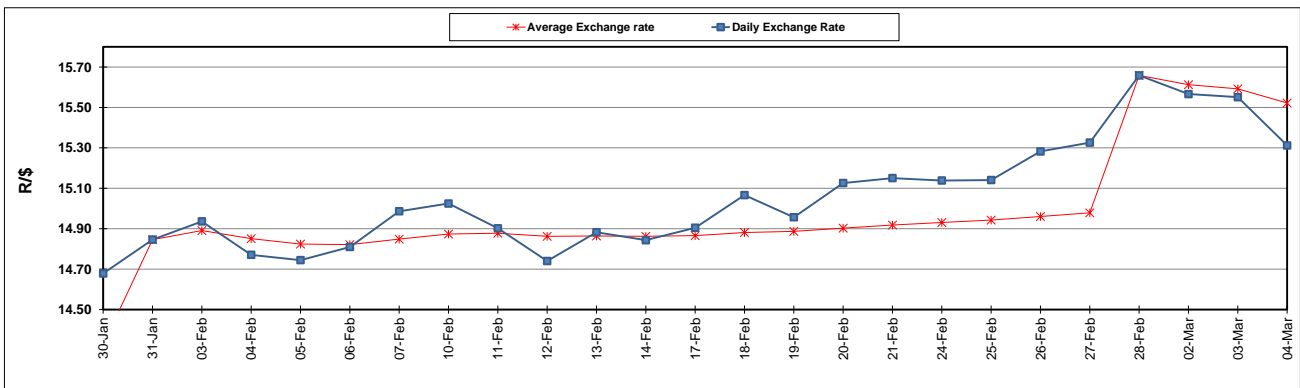
	PETROL 95 ULP	PETROL 93 ULP & LRP	DIESEL 0.05%	DIESEL 0.005%	ILL. PAR.
GAUTENG PUMP PRICE (SA c/l) AS FROM 04/03/2020	1,584.000	1,552.000	-	-	-
WHOLESALE PRICE (SA c/l) AS FROM 04/03/2020	-	-	1,403.260	1,408.660	856.728
SINGLE NATIONAL MAXIMUM RETAIL PRICE	-	-	-	-	1,085.000
BASIC FUEL PRICE - 04/03/2020 (SA c/l)	613.000	600.800	635.902	640.217	612.174
PRESS RELEASE CONTRIBUTION TO BFP 04/03/2020 - 04/03/2020 (SA c/l)	667.970	645.970	683.630	689.030	666.128
UNIT OVER/(UNDER) RECOVERY - 28/02/2020 (SA c/l)	54.970	45.170	47.728	48.813	53.954
AVERAGE BASIC FUEL PRICE 28/02/2020 - 04/03/2020	617.097	604.797	642.592	646.858	621.582
AVERAGE UNIT OVER/(UNDER) RECOVERY 28/02/2020 - 04/03/2020	65.124	55.424	81.539	82.672	95.546

### ANALYSIS MOVEMENT OF AVERAGE OVER/(UNDER) RECOVERY

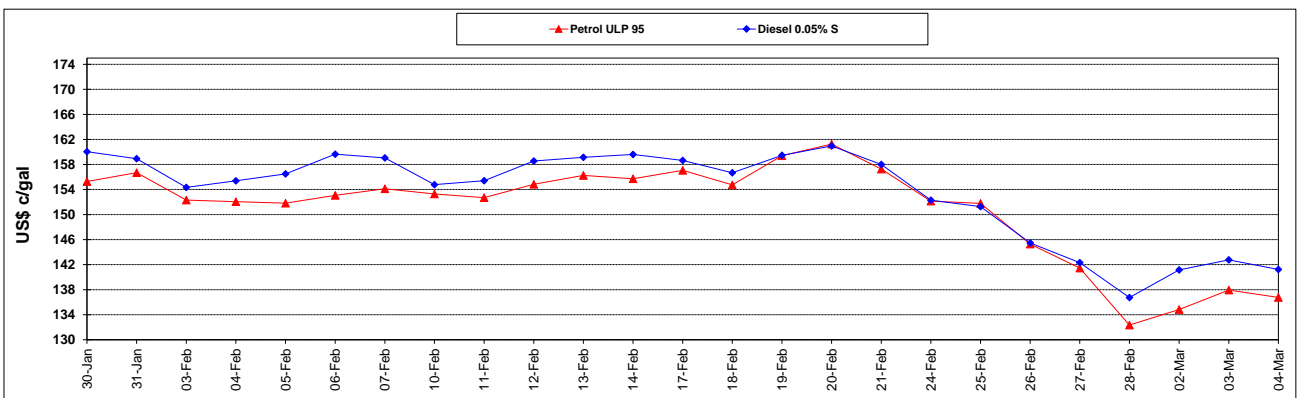
	PETROL 95	PETROL 93	DIESEL 0.05%	DIESEL 0.005%	ILL. PAR.
- MOVEMENT IN INTERNATIONAL PRODUCT PRICES	86.715	76.584	104.022	105.305	117.295
- MOVEMENT IN EXCHANGE RATE	(21.592)	(21.161)	(22.484)	(22.633)	(21.749)
AVERAGE UNIT OVER/(UNDER) RECOVERY 28/02/2020 - 04/03/2020	65.124	55.424	81.539	82.672	95.546

### R/\$ EXCHANGE RATE - (R/\$ 15.3121 - 04/03/2020)

### EXCHANGE RATE USED IN BASIC FUEL PRICE



### INTERNATIONAL PRODUCT PRICES OF BASKET USED IN BASIC FUEL PRICE



### BASIC FUEL PRICE IN SA CENTS PER LITRE

